

**Horizon**

# BQ-160

Perfect Binder BQ-160

**Professional quality books with a simple process.  
Up to 40 mm / 1.6" thick books can be bound.**



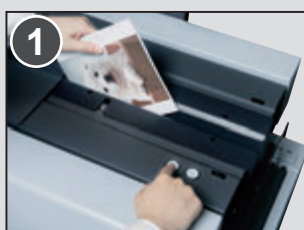
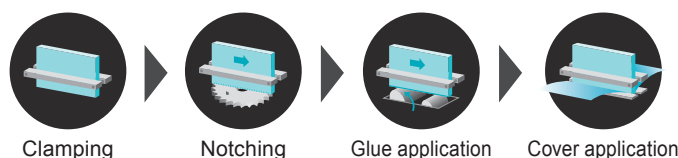
## A Perfect Finishing Solution for On Demand Production!

Simple touchscreen operation and an efficient binding procedure achieves production rates up to 180 cycles per hour.

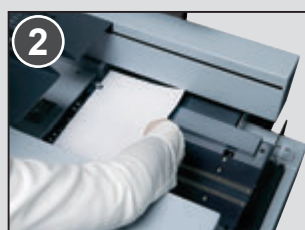


### Simple Operation

#### Quick and Easy Production Steps.



1 Insert the book block and press the start button.



2 Place the cover and press the start button again.



3 Glue is applied on the spine of the book.



4 A cover is applied and book binding is completed.

## 1 Color Touchscreen

A graphical icon-based color touchscreen is provided for easy set-up and operator navigation.

### Ecology functions:

**Power saving mode (stand-by mode):** If the system is not used for a predetermined period, the glue tank heater will automatically adjust to a lower temperature.

**Auto shut down mode:** If the system is not used for a predetermined period of time, the system automatically shuts down.

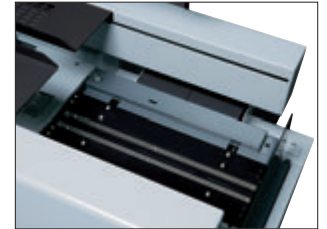


## 5 Nipping Section

Strong nipper mechanism ensures quality book binds. Nipping pressure, nipping height and angle can be adjusted from the touch screen.



Nipper setting screen



## 2 Clamper Section

The clamp opens and closes with the simple press of a button for operator convenience.



Clamper setting



## 3 Notching Section

The double-pass notching function produces strong book binds. Notching can be easily set ON or OFF from the touchscreen.



Notching setting



## 4 Glue Tank Section

Uniquely designed glue tank ensures superior glue application to the book spine for quality binding.

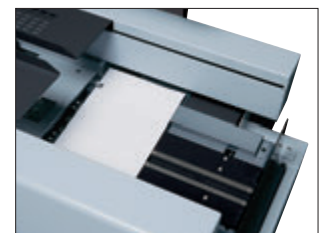


## 6 Cover Section

Perfect binding, tape binding and padding can be performed. Tape width can be adjusted automatically by selecting desired width from the touchscreen.



Perfect binding setting



Tape binding setting

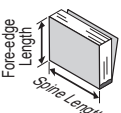
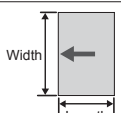


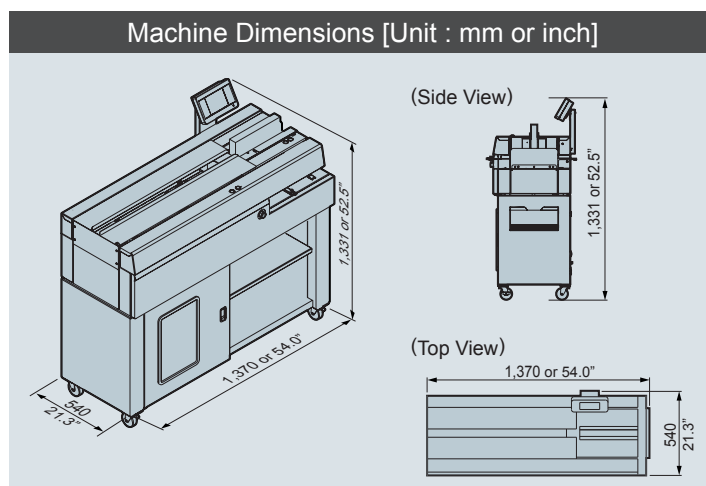
## 7 Creaser (CRB-160): Option

Optional CRB-160 impact creaser can be on-line to prepare creased (up to 8 line) cover.



CRB-160

| BQ-160 Major Specifications |   |
|-----------------------------|---|
| Binding Type                | Cover Binding, Tape Binding, Pad Binding  |
| Book Block Size             |  <b>Spine Length x Fore-edge Length</b><br>Max. 350 x 300 mm or 13.7" x 11.8"<br>Min. 70 x 128 mm or 2.8" x 5.1" |
| Book Block Thickness        | 1 to 40 mm or 0.04" to 1.6"   |
| Cover Size                  |  <b>Length x Width</b><br>Max. 350 x 640 mm or 13.7" x 25.1"<br>Min. 70 x 256 mm or 2.8" x 10.1"                 |
| Cover Weight Range          | 82 to 302 gsm or 22 to 80 lb  |
| Glue Temperature            | 120 to 200 °C or 248 to 392 °F<br>- 180 °C or 356 °F for HM-110 glue<br>- 140 °C or 284 °F for optional HM-302 low temperature glue   |
| Cycle Speed                 | Max. 180 cycles per hour (Cover Binding)<br>Max. 120 cycles per hour (Pad binding)  |
| Voltage/Frequency           | Single Phase 115 to 120 V, 50 or 60 Hz<br>Single Phase 220 to 240 V, 50 or 60 Hz  |
| Rated Current               | Single Phase 115 to 120 V, 50 or 60 Hz, 7.7 A<br>Single Phase 220 to 240 V, 50 or 60 Hz, 3.5 A  |
| Machine Dimensions          | W1,370 x D540 x H1,331 mm or W54.0" x D21.3" x H52.5"   |
| Machine Weight              | 204 kg or 449.8 lb  |



\*The machine design and specifications are subject to change without any notice.

## Wide ranges of perfect binders are available

**BQ-P60** : Tabletop Perfect Binder



**BQ-270V** : Single-Clamp Binder



**BQ-480** : 4-Clamp Binder



### Major Specifications

|   | BQ-P60  | BQ-160   | BQ-270V  | BQ-480   |
|---|---|--|--|--|
| Binding Type                                      | Cover Binding, Tape Binding, Pad Binding                              | Cover Binding, Tape Binding, Pad Binding   | Binding with milling, Binding without milling, and Pad binding             | Binding with milling, Binding without milling and Pad binding              |
| Number of Carriage Clamps                         | 1   | 1  | 1  | 4  |
| Book Block Size (Spine Length x Fore-edge Length) | Max. 315 x 210 mm or 12.4" x 8.2"<br>Min. 210 x 148 mm or 8.3" x 5.9" | Max. 350 x 300 mm or 13.7" x 11.8"<br>Min. 70 x 128 mm or 2.8" x 5.1"              | Max. 320 x 320 mm or 12.59" x 12.59"<br>Min. 135 x 105 mm or 5.32" x 4.14" | Max. 320 x 320 mm or 12.59" x 12.59"<br>Min. 145 x 105 mm or 5.71" x 4.14" |
| Book Block Thickness                              | Max. 25 mm or 0.9"  | 1 to 40 mm or 0.04" to 1.6"  | 1 to 50 mm or 0.04" to 2.00"   | 1 to 65 mm or 0.040" to 2.56"  |
| Cycle Speed                                       | 22 seconds per cycle (Cover Binding)                                  | Max. 180 cycles per hour (Cover Binding)<br>Max. 120 cycles per hour (Pad binding) | Max. 500 cycles per hour   | Max. 1,350 cycles per hour (EVA)<br>Max. 1,000 cycles per hour (PUR)       |

Distributed by

## HORIZON INTERNATIONAL, INC.

510 Kuze Ooyabu-cho, Minami-ku, Kyoto, 601-8206, Japan Phone : +81-(0)75-934-6700, Fax : +81-(0)75-934-6708, [www.horizon.co.jp](http://www.horizon.co.jp)